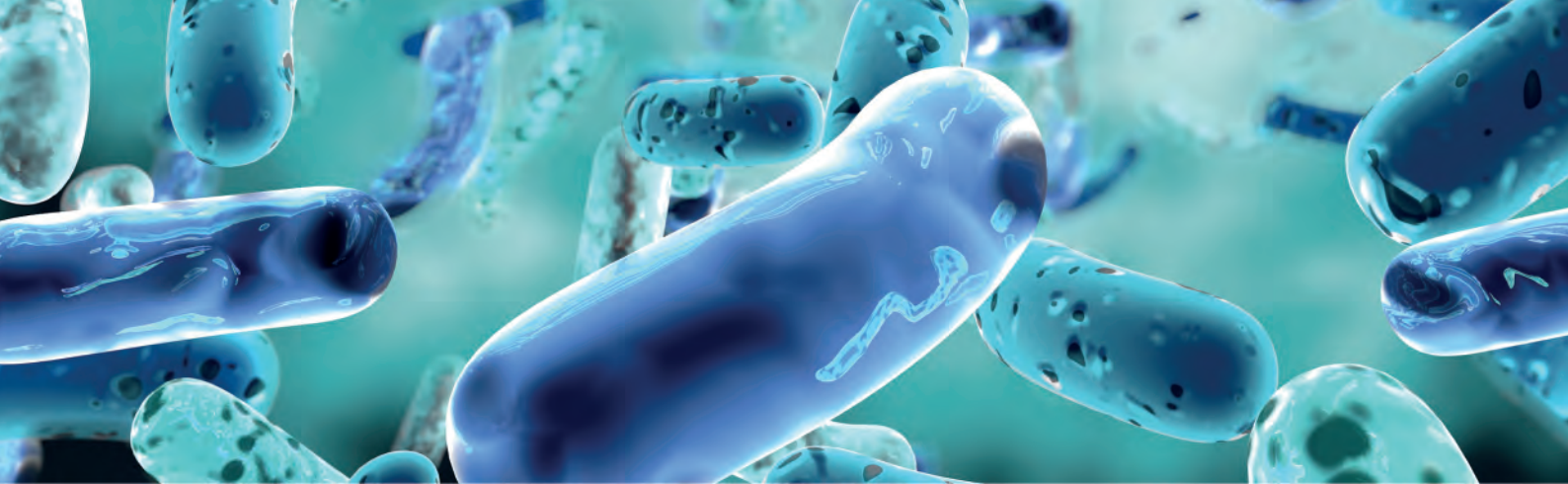




# PATIENT HYGIENE

CATALOGUE 2021



## SKIN SURFACE TYPES:

### MICROBIOTA COMPONENTS DOMINATING IN HIGH-MOISTURE AREAS :

- Actinobacteria (*Micrococcus* spp., *Corynebacterium* spp.)
- Firmicutes (*Staphylococcus* spp.)

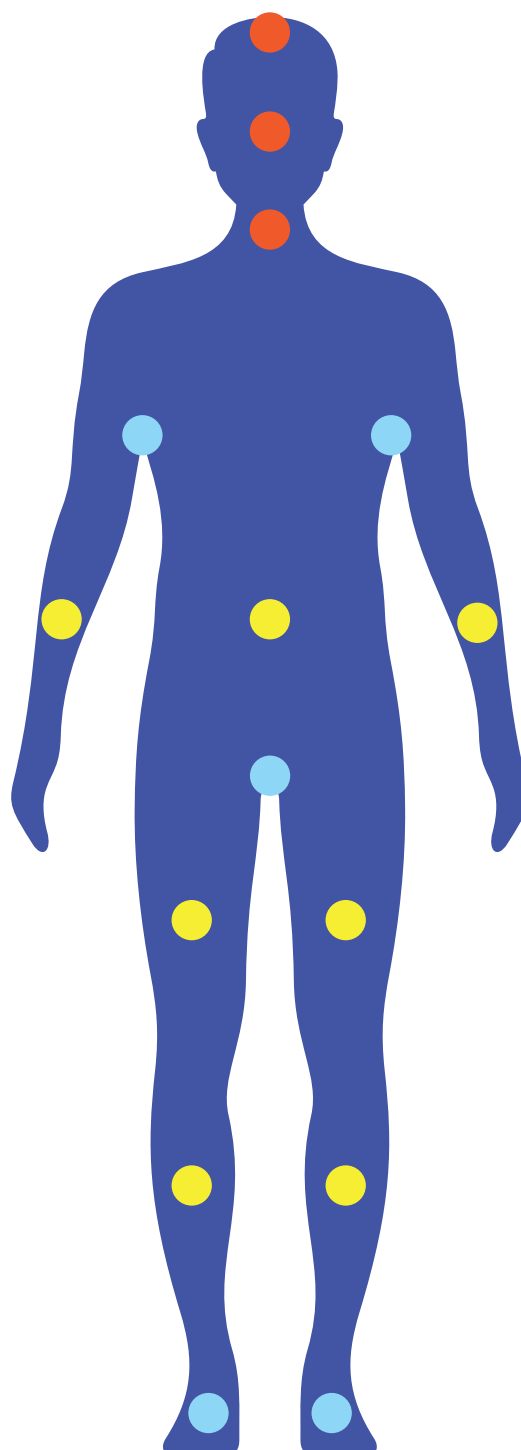
### MICROBIOTA COMPONENTS DOMINATING IN SEBUM-RICH AREAS :

- Actinobacteria (*Micrococcus* spp., *Corynebacterium* spp.)
- Firmicutes (*Staphylococcus* spp.)
- Fungi of the genus *Malassezia*

### MICROBIOTA COMPONENTS DOMINATING IN DRY AREAS :

- Actinobacteria
- Firmicutes
- Bacteroidetes
- Proteobacteria

- HIGH-MOISTURE
- SEBUM-RICH
- DRY





## DISPOSABLE SOAPY SPONGES

Soapy sponges enable a convenient way of washing patients' bodies in hospitals, medical facilities and in the patient's environment. The soap contained in the washer significantly simplifies the washing procedure and does not require the use of additional washing agents.

### SOAPY MITTEN

#### Product features:

- Rounded body wash mitten with a tapered lower part
- Activation of the cleaning agent by moistening with water
- Made of polyester
- Size 17 cm x 24.5 cm
- Covered with a neutral pH detergent (5.5)
- Disposable
- Latex free



REF	PACKAGING
8703	20 pcs.

## SOAPY SPONGE

### Product features:

- Rectangular body wash
- Activation of the cleaning agent by moistening with water
- Made of polyester
- Sizes 12 cm x 20 cm
- Covered with a neutral pH detergent (5.5)
- Disposable
- Latex free



REF	PACKAGING
8704	24 pcs.



## BEDBATH PRODUCTS

Patient hygiene products without the use of water are a convenient alternative to traditional body washing. They enable a easy way of washing patient's bodies both in hospitals, medical facilities and in the patient's environment. The washing agents contained in the washer significantly simplify the washing procedure and do not require the use of other cleaning agents.

## SHAMPOO CAP

### Product features:

- Cap with the content of washing and care agents, intended for cleaning and care of the hair and head area for hospitalized people, bedridden patients and patients requiring special care, such as intensive care.
- No water or rinsing required
- Made of two layers: spunlace non-woven fabric and PE film
- Universal size
- Soaked in a refreshing and moisturizing preeparate with a neutral pH (5.5)
- Can be preheated in a microwave oven
- Disposable
- Latex free



REF	PACKAGING
SC001	1 pcs.



## DRY WASHERS

Products intended for the patient's toilet with the use of additional cleaning agents. It is best suited to medical facilities, retirement homes, and even home conditions.

## DISPOSABLE WASHING MITTEN

### Product features:

- Rectangular mitten for washing the patient's body
- Requires the use of cleaning agents
- Very soft, lint-free Molton material
- Size 15 cm x 23 cm
- Ultrasonically welded edges
- Disposable
- Anti-allergic

REF	PACKAGING
8701	50 pcs.



## DISPOSABLE WASHING MITTEN WITH + PE FOIL

### Product features:

- Rectangular mitten for washing the patient's body
- Requires the use of cleaning agents
- Very soft, lint-free Airlaid material with a foil layer to protect the user
- Size 15 cm x 23 cm
- Ultrasonically welded edges
- Disposable
- Anti-allergic

REF	PACKAGING
8702	50 pcs.



# SINMED



ul. Graniczna 32B  
44-178 Przyszowice  
Poland



tel.: +48 (32) 729 82 36  
fax: +48 (32) 739 00 45  
tel. kom.: 512 997 426



[export@sinmed.pl](mailto:export@sinmed.pl)



[www.sinmed.pl](http://www.sinmed.pl)